

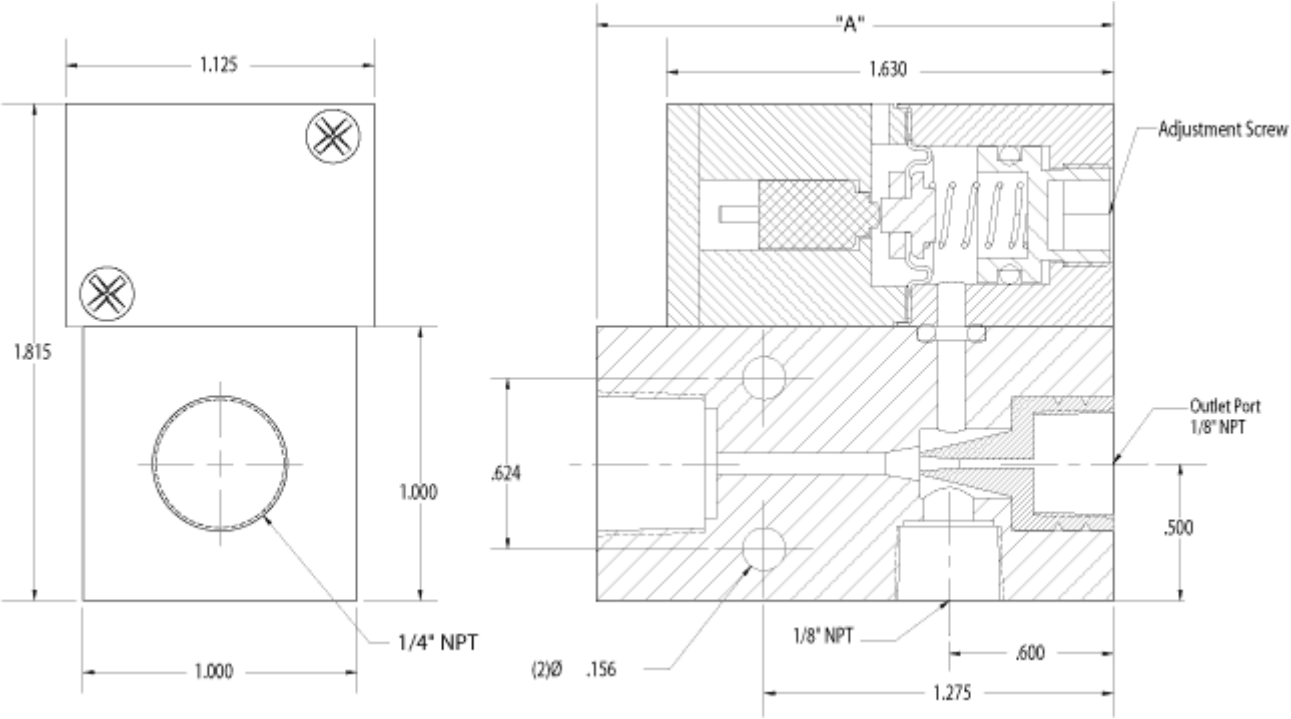
INTEGRATED VENTURI VACUUM SWITCH



iQ Valves newest addition to its line of vacuum automation products is an integrated modularized venturi/vacuum switch combination. This combination unit was designed for end-of-arm tooling applications which require an electrical feedback signal when the vacuum reaches a predetermined level. The venturi generates vacuum levels of 27" Hg with an input pressure of 90 psi. The vacuum switch is adjustable from 5" Hg to 30" Hg with a low hysteresis. The compact venturi is made of black anodized aluminum while the vacuum switch is plastic. The total package weighs 4.7 ounces.

Adjustable Vacuum Switch Specifications

- Range:** 5" to 30" Hg. Vacuum
- Adjustment:** Infinite
- Hysteresis:** 1" to 2.5" Hg
- Output:** Single Pole Double Throw
- Material:** Aluminum
- Electrical:** 250 VAC - 4 amps
- Lead Wires:** #18 AWG, 6" long



| PART NUMBER | OP. PRESS (PSI) | MAX VAC. LEVEL (HG) | MAX VAC. FLOW (SCFM) | SUPPLY FLOW (SCFM @ OP. PRESS) | "A" | PRICE (EA) |
|-------------|-----------------|---------------------|----------------------|--------------------------------|-------|------------|
| 181805 | 90 | 22 | 0.62 | 0.94 | 1.887 | \$101.06 |
| 181809 | 90 | 22.5 | 1.38 | 2.23 | 2.103 | \$133.32 |